

## TEMPASE HOT START DNA POLYMERASE MASTER MIX BLUE



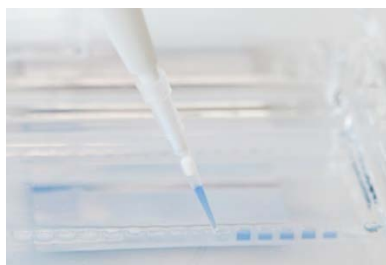
### TEMPase Hot Start DNA Polymerase Master Mix BLUE

#### - For direct gel loading

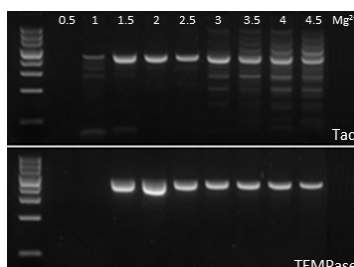
- All-in-one PCR master mix for great convenience
- Convenient reaction setup at room temperature
- High specificity, sensitivity and product yield
- Easy visualization of pipetting

TEMPase Master Mix BLUE eases reaction setup and facilitates direct loading onto agarose and SDS DNA gels. This ensures high reproducibility, lowers risk of contamination and maximizes convenience. The TEMPase Master Mix is also available without dye.

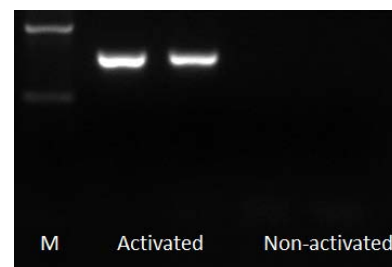
*Easy visualization of pipetting*



*High specificity and yield*



*Inactive at room temperature*



	Size	Content	Cat #
	Reaction size: 50 µl		
TEMPase Hot Start DNA Polymerase 2x Master Mix A BLUE Based on Ammonium Buffer	100 Reactions	2 x 1.25 ml	A290401
	500 Reactions	10 x 1.25 ml	A290403
	2500 Reactions	50 x 1.25 ml	A290406
TEMPase Hot Start DNA Polymerase 2x Master Mix C BLUE Based on Combination Buffer	100 Reactions	2 x 1.25 ml	A290801
	500 Reactions	10 x 1.25 ml	A290803
	2500 Reactions	50 x 1.25 ml	A290806
TEMPase Hot Start DNA Polymerase 2x Master Mix A Based on Ammonium Buffer	100 Reactions	2 x 1.25 ml	A230301
	500 Reactions	10 x 1.25 ml	A230303
	2500 Reactions	50 x 1.25 ml	A230306
TEMPase Hot Start DNA Polymerase 2x Master Mix C Based on Combination Buffer	100 Reactions	2 x 1.25 ml	A230701
	500 Reactions	10 x 1.25 ml	A230703
	2500 Reactions	50 x 1.25 ml	A230706

Tip: Master Mix A is the best choice for most applications. In some cases you may prefer Master Mix C.