

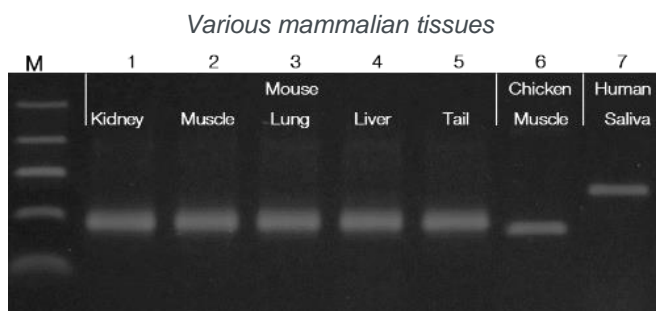
Q-Extract DNA Extraction Hot Start PCR Kit



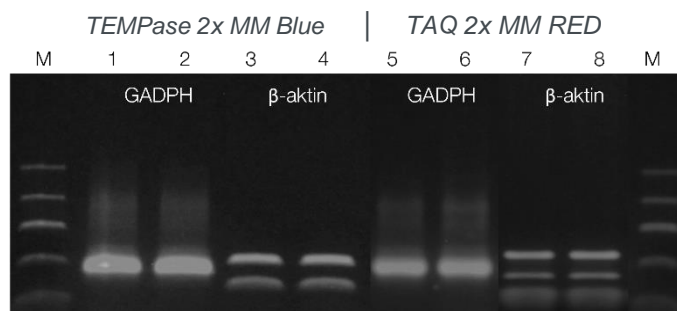
Optimal solution for genotyping

- PCR-ready DNA in just 8 minutes
- Minimal handling
- Hot Start PCR
- Various mammalian tissues, plant leaves, saliva and bacteria
- Direct gel loading
- Scalable
- Automation-friendly

The Q-Extract DNA Extraction Hot Start PCR Kit offers rapid and easy DNA extraction and amplification from a broad range of mammalian tissues, plant leaves saliva and bacteria. Extracted DNA is ready in 8 minutes for PCR by TEMPase Hot Start DNA Polymerase 2x Master Mix BLUE.



Q-Extract DNA Extraction PCR Kit was used to extract and amplify genomic DNA from various mammalian tissues. M: DNA marker Iqon Low DNA Ladder. Lane 1-5: Different mouse tissues as depicted, GAPDH (266 bp). Lane 6: Chicken muscle tissue, HRPT1 (245 bp) and Lane 7: Human saliva, DMD17 (415 bp).



The performance of Q-Extract DNA Extraction Hot Start PCR Kit (lanes 1-4) was compared to the performance of Q-Extract DNA Extraction PCR Kit (lanes 5-8). DNA extracts were extracted from mouse liver tissue. Q-Extract DNA Extraction Hot Start PCR Kit provides high PCR yield and specific amplification. Lanes 1,2,5 and 6: Mouse GAPDH (265 bp) and lanes 3,4,7 and 8: Mouse beta-actin (318 bp).

	Reactions*	Content		Cat #
Q-Extract DNA Extraction PCR Kit Incl. Taq DNA Polymerase 2x Master Mix RED	100	1 x 10 ml 1 x 1.25 ml	Q-Extract Solution Taq 2x Master Mix RED	A570001
	500	5 x 10 ml 5 x 1.25 ml	Q-Extract Solution Taq 2x Master Mix RED	A570004
Q-Extract DNA Extraction Hot Start PCR Kit Incl. TEMPase Hot Start DNA Pol. 2x Master Mix BLUE	100	1 x 10 ml 1 x 1.25 ml	Q-Extract Solution Taq 2x Master Mix RED	A574401
	500	5 x 10 ml 5 x 1.25 ml	Q-Extract Solution Taq 2x Master Mix RED	A574404
Q-Extract DNA Extraction Solution	100	1 x 10 ml	Q-Extract Solution	A570001
	500	5 x 10 ml	Q-Extract Solution	A570004
Q-Extract DNA Extraction PCR Kit – SAMPLE	20	1 x 2 ml 1 x 0.25 ml	Q-Extract Solution Taq 2x Master Mix RED	A570099
Q-Extract DNA Extraction Hot Start PCR Kit – SAMPLE	20	1 x 2 ml 1 x 0.25 ml	Q-Extract Solution TEMPase 2x Master Mix BLUE	A574499
Q-Extract DNA Extraction Solution – SAMPLE	20	1 x 2 ml	Q-Extract Solution	A560099

*1 reaction = 100 µl Q-Extract DNA Extraction Solution + 12.5 µl 2x Master Mix (final PCR reaction 25 µl)