

Q-Extract DNA Extraction PCR Kit

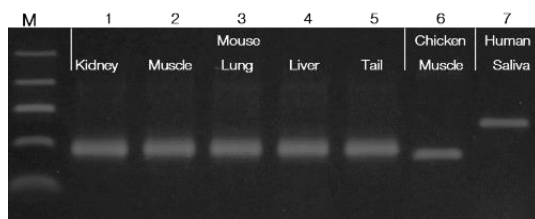


Optimal solution for genotyping

- PCR-ready DNA in just 8 minutes
- Minimal handling
- Various mammalian tissues, plant leaves, saliva and bacteria
- Direct gel loading
- Scalable
- Automation-friendly

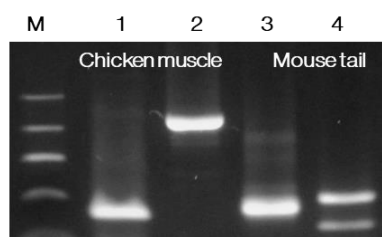
The Q-Extract DNA Extraction PCR Kit offers rapid and easy DNA extraction and amplification from a broad range of mammalian tissues, plant leaves, saliva and bacteria. Extracted DNA is ready in 8 minutes for PCR by Taq DNA Polymerase

Various mammalian tissues



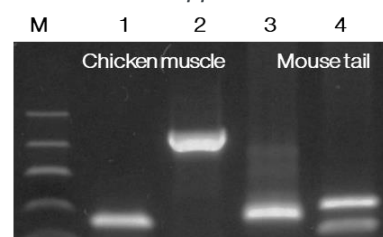
Q-Extract DNA Extraction PCR Kit was used to extract and amplify genomic DNA from various mammalian tissues. M: DNA marker Iqon Low DNA Ladder. Lane 1-5: Different mouse tissues as depicted, GAPDH (266 bp). Lane 6: Chicken muscle tissue, HRTP1 (245 bp) and Lane 7: Human saliva, DMD17 (415 bp).

Q-Extract DNA Extraction PCR Kit



Extraction time: 8 min. (4 steps)

Supplier B



Extraction time: 20 min. (11 steps)

The performance of Q-Extract DNA Extraction PCR Kit was compared to the genotyping PCR kit from competitor B. DNA extracts were extracted from chicken muscle (lanes 1-2) and mouse tail (lanes 3-4). Q-Extract DNA Extraction PCR Kit and the competitor B performs equally well. M: DNA marker Iqon Low DNA Ladder. Lane 1: Chicken HRTP1 (245 bp), Lane 2: Chicken GAPDH (775 bp), Lane 3: Mouse GAPDH (265 bp) and Lane 4: Mouse B-actin (318 bp). Each extraction and amplification have been conducted according to the supplier manuals.

	Reactions*	Content		Cat #
Q-Extract DNA Extraction PCR Kit Incl. Taq DNA Polymerase 2x Master Mix RED	100	1 x 10 ml 1 x 1.25 ml	Q-Extract Solution Taq 2x Master Mix RED	A570001
	500	5 x 10 ml 5 x 1.25 ml	Q-Extract Solution Taq 2x Master Mix RED	A570004
Q-Extract DNA Extraction Hot Start PCR Kit Incl. TEMPase Hot Start DNA Pol. 2x Master Mix BLUE	100	1 x 10 ml 1 x 1.25 ml	Q-Extract Solution Taq 2x Master Mix RED	A574401
	500	5 x 10 ml 5 x 1.25 ml	Q-Extract Solution Taq 2x Master Mix RED	A574404
Q-Extract DNA Extraction Solution	100	1 x 10 ml	Q-Extract Solution	A570001
	500	5 x 10 ml	Q-Extract Solution	A570004
Q-Extract DNA Extraction PCR Kit – SAMPLE	20	1 x 2 ml	Q-Extract Solution	A570099
		1 x 0.25 ml	Taq 2x Master Mix RED	
Q-Extract DNA Extraction Hot Start PCR Kit – SAMPLE	20	1 x 2 ml	Q-Extract Solution	A574499
		1 x 0.25 ml	TEMPase 2x Master Mix BLUE	
Q-Extract DNA Extraction Solution – SAMPLE	20	1 x 2 ml	Q-Extract Solution	A560099

*1 reaction = 100 µl Q-Extract DNA Extraction Solution + 12.5 µl 2x Master Mix (final PCR reaction 25 µl)